

ALL DIMENSIONS ARE APPROXIMATE

REVISION NOTES:

**PROPRIETARY AND CONFIDENTIAL**  
 THE INFORMATION CONTAINED IN THIS DRAWING IS THE SOLE PROPERTY OF ROSWELL WAKE AIR. ANY REPRODUCTION IN PART OR AS A WHOLE WITHOUT THE WRITTEN PERMISSION OF ROSWELL WAKE AIR IS PROHIBITED.

DRAWN BY: ERIC GAGNON

Process: SEE BOM

MATERIAL: SEE BOM

FINISH: SEE BOM

DO NOT SCALE DRAWING

UNLESS OTHERWISE SPECIFIED:

DIMENSIONS ARE IN INCHES  
 TOLERANCES:

- DECIMAL: x. ± 0.06
- x.x ± 0.03
- x.xx ± 0.015
- x.xxx ± 0.005
- FRACTIONAL: xx x/x ± 1/16"
- x x/x ± 1/32"
- x/x ± 1/64"
- ANGULAR: ±0.5°

R O S W E L L .

RWA-300806-E1-REV-E3-(Complete V.2 Universal Tower Assembly BOM)

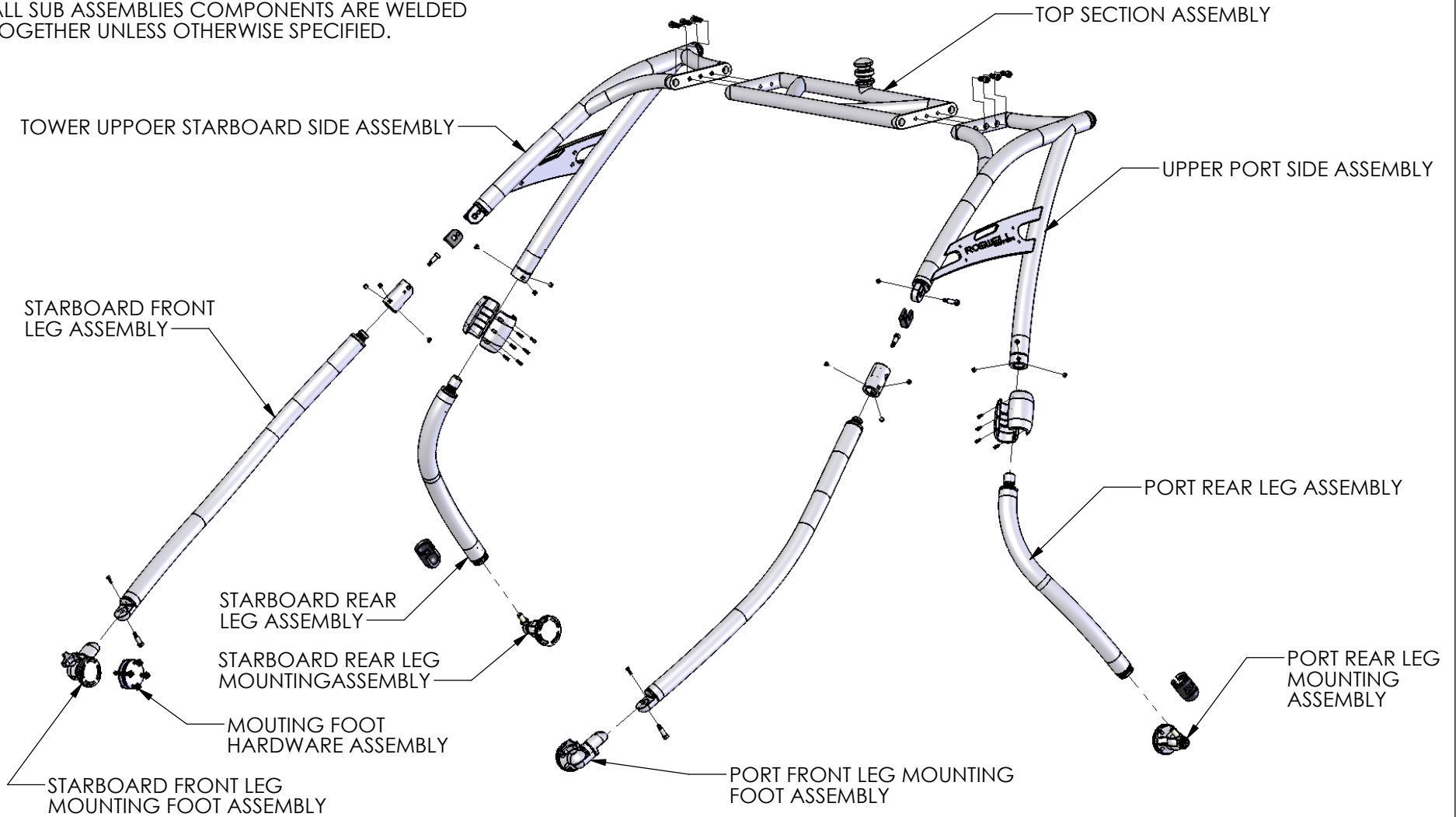
BRAND-DATE-DESIGNER-REVISION-(Description)

SCALE: 1:32

REVISION DATE: 03/10/06

NOTE: STARBOARD AND PORT SIDE ARE ASSEMBLIES  
MIRRORED UPON CENTER PLANE OF TOW HEAD.

ALL SUB ASSEMBLIES COMPONENTS ARE WELDED  
TOGETHER UNLESS OTHERWISE SPECIFIED.



REVISION NOTES:

UNLESS OTHERWISE SPECIFIED:

DIMENSIONS ARE IN INCHES  
TOLERANCES:

DECIMAL:    x.     ± 0.06  
              x.x    ± 0.03  
              x.xx   ± 0.015  
              x.xxx   ± 0.005  
FRACTIONAL: xx x/x ± 1/16"  
              x x/x ± 1/32"  
              x/x ± 1/64"  
ANGULAR: ±0.5°

R O S W E L L .

RWA-300806-E1-REV-E3-(Complete V.2 Universal Tower Assembly BOM)

BRAND-DATE-DESIGNER-REVISION-(Description)

SCALE: 1:20

REVISION DATE: 03/10/06

**PROPRIETARY AND CONFIDENTIAL**  
THE INFORMATION CONTAINED IN THIS  
DRAWING IS THE SOLE PROPERTY OF  
ROSWELL WAKE AIR. ANY  
REPRODUCTION IN PART OR AS A WHOLE  
WITHOUT THE WRITTEN PERMISSION OF  
ROSWELL WAKE AIR IS  
PROHIBITED.

DRAWN BY:  
ERIC GAGNON

Process:  
SEE BOM

MATERIAL:  
SEE BOM

FINISH:  
SEE BOM

DO NOT SCALE DRAWING

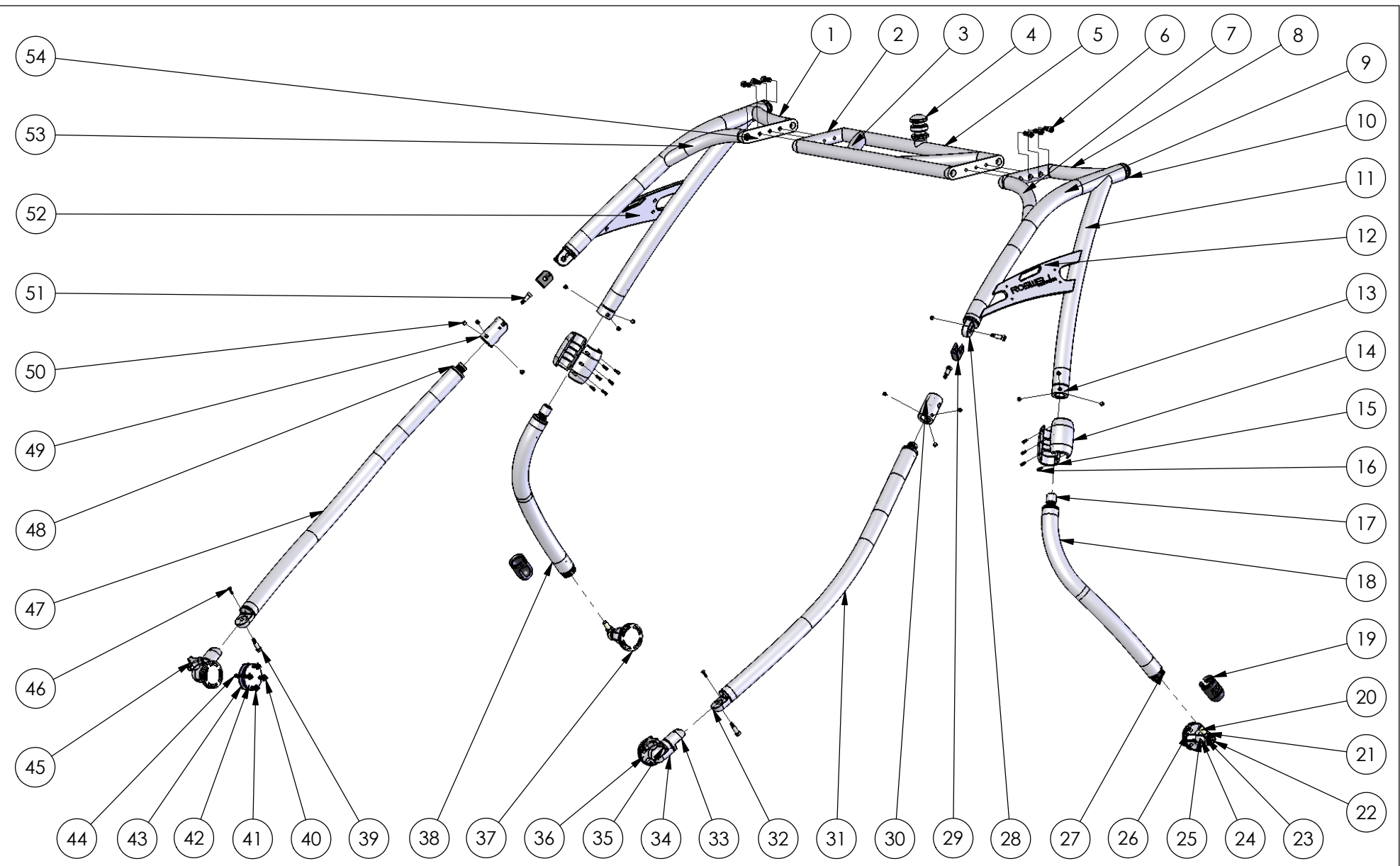
5

4

3

2

1



REVISION NOTES:

UNLESS OTHERWISE SPECIFIED:

DIMENSIONS ARE IN INCHES  
 TOLERANCES:  
 DECIMAL:   x.   ± 0.06  
           x.x   ± 0.03  
           x.xx ± 0.015  
           x.xxx ± 0.005  
 FRACTIONAL: xx x/x ± 1/16"  
               x x/x ± 1/32"  
               x/x ± 1/64"  
 ANGULAR: ±0.5°

ROSWELL.

RWA-300806-E1-REV-E3-(Complete V.2 Universal Tower Assembly BOM)

BRAND-DATE-DESIGNER-REVISION-(Description)

SCALE: 1:20

REVISION DATE: 03/10/06

**PROPRIETARY AND CONFIDENTIAL**  
 THE INFORMATION CONTAINED IN THIS DRAWING IS THE SOLE PROPERTY OF ROSWELL WAKE AIR. ANY REPRODUCTION IN PART OR AS A WHOLE WITHOUT THE WRITTEN PERMISSION OF ROSWELL WAKE AIR IS PROHIBITED.

DRAWN BY: ERIC GAGNON

MATERIAL: SEE BOM

Process: SEE BOM

FINISH: SEE BOM

DO NOT SCALE DRAWING

AREA 52V.2 BOM Table

| ITEM NO. | PART NUMBER  | PROCESS          | MATERIAL                  | FINISH     | QTY. |
|----------|--|------------------|---------------------------|------------|------|
| 1        | RWA-191005-E3-REV-G3-(Starboard Rear Cross Bar)                        | CUT/BENT/COPE    | 6000 SERIES AL            | POLISHED   | 1    |
| 2        | RWA-170806-E9-REV-E0-(V.2 Inner Top Fitting)                           | CNC MACHINED     | 6000 SERIES AL            | POLISHED   | 2    |
| 3        | RWA-291105-E3-REV-E0-(Inner Halo Bars)                                 | CUT/BENT/COPE    | 6000 SERIES AL            | POLISHED   | 2    |
| 4        | RWA-241005-E7-REV-E2-(Universal Tower Tow Head-Double)                 | LATHE/COPE       | 6000 SERIES AL            | POLISHED   | 1    |
| 5        | RWA-291105-E1-REV-G1-(Center Cross Bar)                                | CUT/COPE         | 6000 SERIES AL            | POLISHED   | 2    |
| 6        | SCH_~500-13 UNC_1~25_SIMP  | STOCK ITEM       | STAINLESS STEEL           | RAW        | 6    |
| 7        | RWA-241005-E5-REV-E1-(Port Front Cross Bar)                            | CUT/BENT/COPE    | 6000 SERIES AL            | POLISHED   | 1    |
| 8        | RWA-241005-E6-REV-G3-(Port Rear Cross Bar)                             | CUT/BENT/COPE    | 6000 SERIES AL            | POLISHED   | 1    |
| 9        | RWA-230806-E1-REV-E0-(V.2 Upper Front Leg)                             | CUT/BENT         | 6000 SERIES AL            | POLISHED   | 2    |
| 10       | RWA-241005-E8-REV-E0-(2.375 Tube End Cap)                              | LATHE            | 6000 SERIES AL            | POLISHED   | 2    |
| 11       | RWA-220806-E5-REV-E1-(V.2 Upper Rear Leg)                              | CUT/BENT/COPE    | 6000 SERIES AL            | POLISHED   | 2    |
| 12       | RWA-180806-E4-REV-E0-(V.2 Port Side Plate)                             | CNC MACHINED     | 6000 SERIES AL            | POLISHED   | 1    |
| 13       | RWA-191005-E10-REV-G1-(Female Tube Rotation Fitting)                   | CNC MACHINED     | 6000 SERIES AL            | POLISHED   | 2    |
| 14       | RWA-060706-G1-REV-G0-(Area 52 Rear Leg Collar - Side B)                | DIE CAST         | 6000 SERIES AL            | POLISHED   | 2    |
| 15       | RWA-060706-G1-REV-G0-(Area 52 Rear Leg Collar - Side A)                | DIE CAST         | 6000 SERIES AL            | POLISHED   | 2    |
| 16       | SCH_~250-20 UNC_0~75_SIMP  | STOCK ITEM       | STAINLESS STEEL           | RAW        | 12   |
| 17       | RWA-021006-E2-REV-E0-(V.2 Rear Leg Male Tube Rotation Fitting)         | LATHE            | 6000 SERIES AL            | POLISHED   | 2    |
| 18       | RWA-241005-E4-REV-G2-(Port Lower Rear Leg)                             | CUT/BENT         | 6000 SERIES AL            | POLISHED   | 1    |
| 19       | RWA-211005-E1-REV-E0-(2.375 Rubber Booty)                              | INJECTION MOLDED | NEOPRENE                  | HIGH GLOSS | 2    |
| 20       | A51PT-03-0023-REV-E2-(Rod End)   | STOCK ITEM       | ZINC PLATED MILD STEEL    | RAW        | 2    |
| 20       | A51PT-03-0024-REV-E2-(Rod End Ball)                                    | STOCK ITEM       | TIN NICKEL PLATED STEEL   | RAW        | 2    |
| 21       | HEX NUT-THIN_~625-18 UNF_SIMP  | STOCK ITEM       | STAINLESS STEEL           | RAW        | 2    |
| 22       | SHLDR-HEX_5%8_1_SIMP   | STOCK ITEM       | STAINLESS STEEL           | RAW        | 2    |
| 23       | RWA-260906-E1-REV-E0-(V.2 Foot Washer)                                 | LATHE            | 6000 SERIES AL            | RAW        | 2    |
| 24       | RWA-260906-E2-REV-E3-(R.2 Rod End Cradle)                              | CNC MACHINED     | STAINLESS STEEL           | POLISHED   | 2    |
| 25       | RWA-251005-E6-REV-G1-(0.500-13 UNC Long Set Screw)                     | STOCK ITEM       | STAINLESS STEEL           | RAW        | 2    |
| 26       | RWA-201005-E5-REV-E1-(Foot)  | CNC MACHINED     | 6000 SERIES AL            | POLISHED   | 2    |
| 27       | RWA-201005-E1-REV-E0-(2.375 Rod End Tube Fitting)                      | LATHE            | 6000 SERIES AL            | POLISHED   | 2    |
| 28       | RWA-220806-E8-REV-E0-(V.2 Male Folding Fitting)                        | CNC MACHINED     | 6000 SERIES AL            | POLISHED   | 2    |
| 29       | RWA-191005-E15-REV-G1-(Folding & Rotation Shim)                        | PUNCHED/BENT     | STAINLESS STEEL           | RAW        | 2    |
| 30       | RWA-230806-E3-REV-E1-(V.2 Port Female Folding & Rotation Fitting)      | CNC MACHINED     | 6000 SERIES AL            | POLISHED   | 1    |
| 31       | RWA-240806-E1-REV-E1-(V.2 Port Lower Front Leg)                        | CUT/BENT         | 6000 SERIES AL            | POLISHED   | 1    |
| 32       | RWA-210806-E1-REV-E0-(V.2 Lap Tube End Fitting)                        | CNC MACHINED     | 6000 SERIES AL            | POLISHED   | 2    |
| 33       | RWA-210806-E3-REV-E0-(V.2 Lap Link Small Increments)                   | CNC MACHINED     | 6000 SERIES AL            | POLISHED   | 2    |
| 34       | RWA-210806-E2-REV-E0-(V.2 Lap Link Large Increments)                   | CNC MACHINED     | 6000 SERIES AL            | POLISHED   | 2    |
| 35       | FLH-SCH-82_~500-13 UNC_1~25_SIMP                                       | STOCK ITEM       | STAINLESS STEEL           | RAW        | 2    |
| 36       | RWA-210806-E4-REV-E0-(V.2 Lap Foot)                                    | CNC MACHINED     | 6000 SERIES AL            | POLISHED   | 2    |
| 37       | RWA-241005-E1-REV-E0-(Coped Sub Plate)                                 | CNC MACHINED     | 6000 SERIES AL            | POLISHED   | 4    |
| 38       | RWA-191005-E7-REV-G2-(Starboard Lower Rear Leg)                        | CUT/BENT         | 6000 SERIES AL            | POLISHED   | 1    |
| 39       | SHLDR-HEX_1%2_1~25_SIMP  | STOCK ITEM       | STAINLESS STEEL           | POLISHED   | 6    |
| 40       | HVY HEX NUT JAM_~3125-18 UNC_SIMP                                      | STOCK ITEM       | ZINC PLATED STEEL & NYLON | RAW        | 16   |
| 41       | FLW_~3125  | STOCK ITEM       | STAINLESS STEEL           | RAW        | 16   |
| 42       | RWA-251005-E8-REV-E0-(Internal Mounting Plate)                         | FORGED           | 6000 SERIES AL            | POLISHED   | 4    |
| 43       | RWA-251005-E7-REV-E0-(Rubber Mounting Pad)                             | DIE CUT          | NEOPRENE                  | RAW        | 8    |
| 44       | SCH_~3125-18 UNC_3_SIMP - fully threaded                               | STOCK ITEM       | STAINLESS STEEL           | RAW        | 16   |
| 45       | RWA-220805-E1-REV-E0-(V.2 QR Trilever Handle)                          | OVERMOLDED       | 6000 SERIES AL            | POLISHED   | 2    |
| 45       | RWA-220805-E2-REV-E0-(V.2 QR Trilever SS Threading)                    | CNC MACHINED     | STAINLESS STEEL           | RAW        | 2    |
| 46       | FLH-SCH-82_~250-20 UNC_1_SIMP  | STOCK ITEM       | STAINLESS STEEL           | RAW        | 6    |
| 47       | RWA-230806-E2-REV-E1-(V.2 Starboard Lower Front Leg)                   | CUT/BENT         | 6000 SERIES AL            | POLISHED   | 1    |
| 48       | RWA-021006-E1-REV-E0-(V.2 Front Leg Male Tube Rotation Fitting)        | LATHE            | 6000 SERIES AL            | POLISHED   | 2    |
| 49       | RWA-230806-E4-REV-E1-(V.2 Starboard Female Folding & Rotation Fitting) | CNC MACHINED     | 6000 SERIES AL            | POLISHED   | 1    |
| 50       | SSCR-HEX-CP_~500-13 UNC_0~5_HELI                                       | STOCK ITEM       | STAINLESS STEEL           | RAW        | 14   |
| 51       | SHLDR-HEX_1%2_1_SIMP   | STOCK ITEM       | STAINLESS STEEL           | RAW        | 2    |
| 52       | RWA-180806-E3-REV-E0-(V.2 Starboard Side Plate)                        | CNC MACHINED     | 6000 SERIES AL            | POLISHED   | 1    |
| 53       | RWA-191005-E4-REV-E0-(Starboard Front Cross Bar)                       | CUT/BENT/COPE    | 6000 SERIES AL            | POLISHED   | 1    |
| 54       | RWA-170806-E10-REV-E0-(V.2 Outer Top Fitting)                          | CNC MACHINED     | 6000 SERIES AL            | POLISHED   | 2    |